



Notice of construction activities near Steeple Claydon

January 2021 | www.hs2.org.uk

High Speed Two (HS2) is the new high speed railway for Britain. In response to the Covid-19 virus we have worked hard to ensure that our working practices are fully aligned with the Site Operating Procedures produced by the Construction Leadership Council and in line with Government and Public Health England advice. We will be keeping our local website www.hs2inbucksandbox.co.uk up to date with information on our works, and the measures we have in place to maintain the safety. Please be assured that only sites that can operate within the guidelines are operational. All sites will remain under constant review. We have postponed all face-to-face engagement events and meetings and have put in place a number of channels to communicate with communities, such as letters and phone calls, as well as updates and alerts from each of the local community websites. You can sign up for regular updates in your local area at www.hs2inbucksandbox.co.uk

What will we be doing?

Before the main railway construction works for the realignment and reconstruction of the new bridge commences on Addison Road, Fusion, EKFB and Western Power Distribution need to undertake a number of construction activities. To minimise disruption, the works have been coordinated so that they can be undertaken under one road closure.

Activities include:

- Traffic management and localised removal of roadside hedgerows and vegetation for future construction works required for the new Addison Road overbridge (Fusion)
- Ground investigation survey works (EKFB)
- Diversion of two underground electrical high voltage circuits (Western Power Distribution)

If you have a question about HS2 or our works, please contact our HS2 Helpdesk team on 08081 434 434 or email hs2enquiries@hs2.org.uk

Duration of works

The works will start from 8 February 2021 until the 12 February 2021

Normal working hours:
Monday to Friday 8am – 6pm

Our contractors may also be on site for one hour's quiet start up and shut down outside of these times.

What to expect

Daily full road closure of Addison Road from Monday 8 February 2021 to Friday 12 February 2021 from 8am to 6pm.

Outside of these times each night Addison Road will be open to traffic as normal.

Signposted local diversion route in place.

Some additional traffic on local roads.

Noise from the equipment used for the works.

What we will do

Manage impacts, such as traffic and noise with the aim of reducing or removing them.

Notice of construction activities near Steeple Claydon

Notification



www.hs2.org.uk

Vegetation clearance (Fusion)

The clearance work will be completed by a small workforce who will use machinery and hand-held equipment to clear sections of hedgerows and vegetation.

Where appropriate some sections of vegetation will be replaced with temporary fencing, this will help keep the site secure ahead of future construction activities.

What consents do we have to undertake this work?

There have been extensive ecological and tree surveys undertaken across the vegetation identified for clearance.

Before any vegetation is cleared it will be thoroughly inspected by qualified ecologists. Any protected species found to be present will be recorded and no vegetation will be cleared until the species have left the site. Any vegetation that cannot be removed due to the presence of protected ecology will be left until further surveys confirm that the ecology is no longer present.

The vegetation clearance will be undertaken in accordance with:

HS2 Organisational European Protected Species Great for Crested Newt Licences WML025. First issued March 2017.

HS2 Organisational European Protected Species Licence for Badger WML024. First issued February 2018.

Further details are available online.

- <https://www.gov.uk/government/publications/hs2-phase-one-environmental-statement-volume-5-ecology>

The work on HS2 is guided by High-Speed Rail (LondonWestMidlands) Act 2017.

- <http://www.legislation.gov.uk/ukpga/2017/7/contents/enacted>

Ground investigation survey works (EKFB)

We require a number of core samples from the existing road using a small drilling rig for laboratory testing. We will additionally be excavating trial holes to identify the exact location and depth of services which may be affected by the future works. Each hole will be filled in before we remove the traffic management.

Utility diversion works (Western Power Distribution)

Western Power Distribution need to divert two of their high voltage underground electrical circuits away from the construction area across Addison Road. This involves bringing together both of these high voltage circuits into a single trench. The trench will be filled in before we remove the traffic management.

There will be no disruption to power supplies during these works.

When will the works take place?

Works will begin on Monday 8 February 2021 till Friday 12 February 2021. Addison Road will be closed from 8am till 6pm where the local diversion route advised overleaf will be in place. Outside of these times Addison Road will be open as normal. Through access to emergency services will be permitted during this road closure.

During the road closure, the bus service will be diverted around the closed section of Addison Road.

How will this works affect you?

You may notice extra traffic on the roads due to the workforce and equipment movements in the area. HS2 construction traffic, HGV's and all vehicles of 7.5 tonnes or greater making deliveries to the site will use The Broadway from the A41 along Perry Hill/ Gawcott Road/ Werner Terrace to Addison Road.

We will be closely monitoring the roads around the site and regular road sweeping will take place. We will take measures to ensure we keep mud off the local roads, such as cleaning dirty vehicles before they leave work areas.

Access to the working areas will be along Addison Road. Temporary Road closure and diversion verge access signage will be installed. These will be on standard A-frames and secured with ballasted sandbags which will be placed on the roadside verges. These will be in place during the diversion.

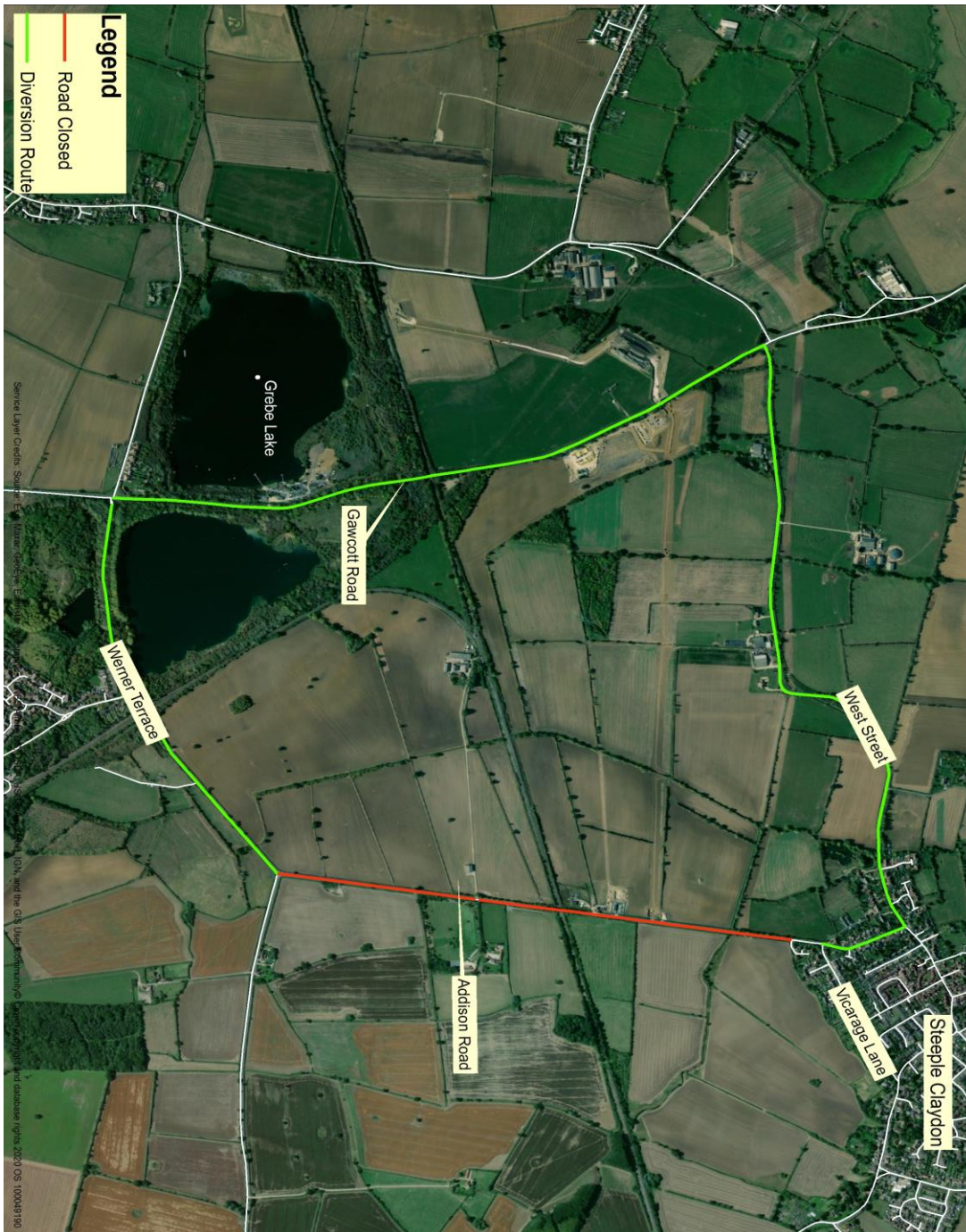
Notice of construction activities near Steeple Claydon

www.hs2.org.uk

Notification



Map below shows the diversion route that will in between the hours of 8am to 6pm : 8 February to 12 February 2021.



Contact our HS2 Helpdesk team on **08081 434 434**

Keeping you informed

We are committed to keeping you informed about work on HS2. This includes ensuring you know what to expect and when to expect it, as well as how we can help.

Residents' Charter and Commissioner

The Residents' Charter is our promise to communicate as clearly as we possibly can with people who live along or near the HS2 route. www.gov.uk/government/publications/hs2-residents-charter

We also have an independent Residents' Commissioner whose job is to make sure we keep to the promises we make in the Charter and to keep it under constant review. Find reports at: www.gov.uk/government/collections/hs2-ltd-residents-commissioner

You can contact the Commissioner at: residentscommissioner@hs2.org.uk

Construction Commissioner

The Construction Commissioner's role is to mediate and monitor the way in which HS2 Ltd manages and responds to construction complaints. You can contact the Construction Commissioner by emailing: complaints@hs2-cc.org.uk

Property and compensation

You can find out all about HS2 and properties along the line of route by visiting: www.gov.uk/government/collections/hs2-property
Find out if you're eligible for compensation at: www.gov.uk/claim-compensation-if-affected-by-hs2

Holding us to account

If you are unhappy for any reason you can make a complaint by contacting our HS2 Helpdesk team. For more details on our complaints process, please visit our website: www.hs2.org.uk/how-to-complain

Contact Us

Contact our HS2 Helpdesk team all day, every day of the year on:

 Freephone **08081 434 434**

 Minicom **08081 456 472**

 Email **hs2enquiries@hs2.org.uk**

Write to:

FREEPOST

HS2 Community Engagement

Website **www.hs2.org.uk**

To keep up to date with what is happening in your local area, visit: **www.hs2inyourarea.co.uk**

Please contact us if you'd like a free copy of this document in large print, Braille, audio or easy read. You can also contact us for help and information in a different language.

HS2 Ltd is committed to protecting personal information. If you wish to know more about how we use your personal information please see our Privacy Notice <https://www.gov.uk/government/publications/high-speed-two-ltd-privacy-notice>

Reference number: FUS_AWN_0165HS2-EW-Fusion -Ph1-Ar-Ce-C2-Prog-works-16-20/01/2021

High Speed Two (HS2) Limited, registered in England and Wales.
Registered office: Two Snowhill, Snow Hill Queensway, Birmingham B4 6GA.
Company registration number: 06791686. VAT registration number: 888 8512 56.