

## **Sandhill Road Closure – Community Update**

As advised in our previous update, the road closure on Sandhill Road, Middle Claydon has needed to remain in effect beyond our forecast date for the re-opening of the road.

We are pleased to confirm in this update that the reopening of the road will occur on Monday 8 November.

As previously advised, the Alliance has suffered significant delays due to COVID, haulage and other issues in the precast concrete component deliveries required for the main arch reconstruction from our supplier ABM Precast UK, based in the East Midlands. ABM has now managed to overcome their issues and we can confirm that in the last two weeks all of the precast components have been delivered to site and all have now been fully installed in their final locations.

During the last few days, we have started the final stages of the main bridge arch works by setting up weatherproof cover for the completion of the waterproofing works to the deck. This is ongoing as we supply this update.

We can further confirm that the materials, resources and planning for the remaining works are all in place and we consider our forecast of the road being adopted by Buckinghamshire Council and opened to the public for the morning of Monday 8 November is robust.

### **Minimising disruption**

Access to properties and premises along this road will continue to be maintained throughout the remaining works.

We continue to seek to minimise the disruption created by this closure and our works and our Traffic Ambassadors will continue to be periodically stationed on Sandhill Road and in the surrounding area. They will be monitoring the performance of EWRA traffic to reduce the impact on local residents as effectively as possible.

We will continue to work with consideration for the local residents and will keep the local community notified of ongoing progress to completion.

### **Progress Update**

- All precast concrete components have arrived on site and all precast arches and parapets have now been installed
- All of the remaining structural concrete slabs have now been cast on the structure and completed

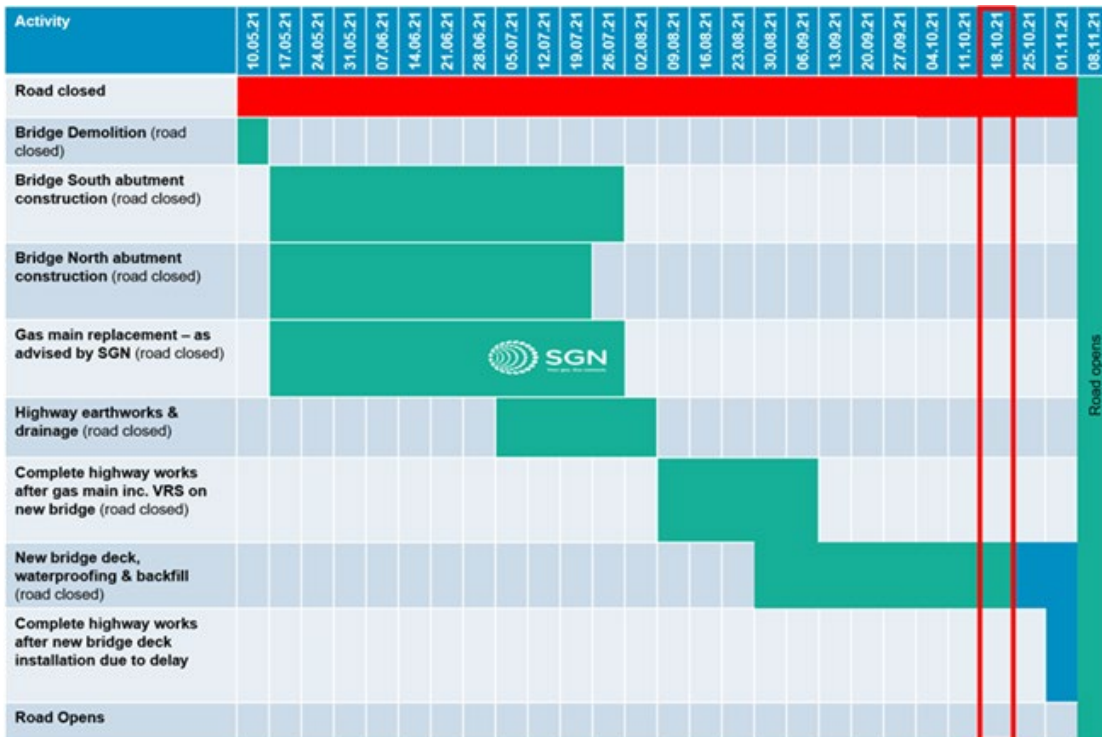


Elevation view of the Sandhill Road works [taken 19 October]

### Upcoming works include:

- Deck waterproofing, drainage and services provision
- Highways build up including sub-base and kerbs over bridge deck to be installed
- Work to join the highway embankment to the bridge abutments.

### Programme Update – w.c. 18.10.21



### Getting in touch

If you have any queries, would like to make a complaint, or wish to be added to our distribution list to receive these updates directly, please email [publicinformation@ewralliance.co.uk](mailto:publicinformation@ewralliance.co.uk) or contact the Network Rail's 24/7 helpline on 0345 711 4141.